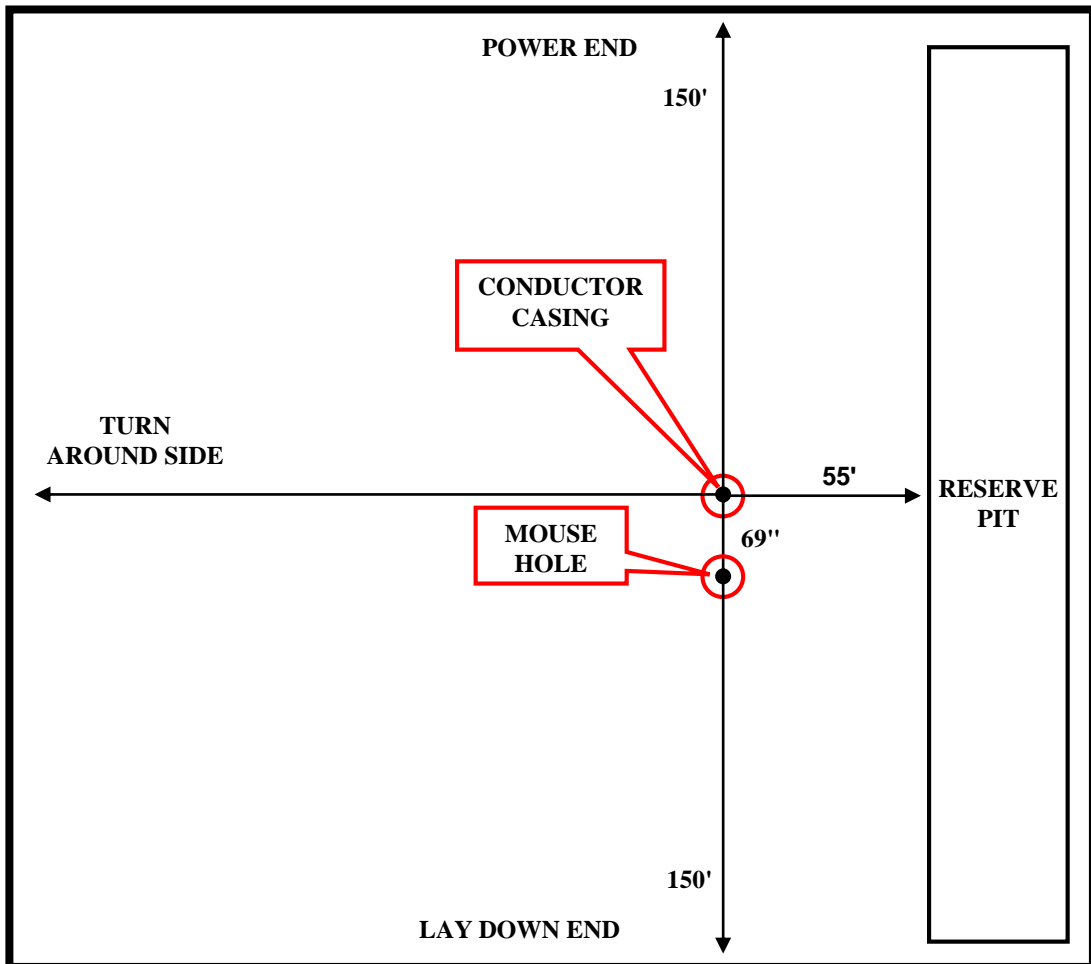




## RIG #101 CONDUCTOR CASING SCHEMATIC



**Note:** All measurements are from the center of the conductor casing. The mouse hole is 69" from the center of the conductor casing w/ 0° slope (angle). This rig has a top drive so the mouse hole should be a minimum of 75' deep (from ground level) with casing or liner with a minimum ID of 10". The reserve pit is a minimum of 55' from the center of conductor casing.